

# Warrawong Community Health Centre

## Data Report

Country is Our Mother, Our Teacher, Our Library, and Our kin. She sustains us, inspires us, and surrounds us. The experience of Country is both individual and collective, both new and familiar. From her, we learn, share, and flourish.

Continuing to care for Country is central to Our being, Our identity. Country is a responsibility, not a right, and it is there for all who respect and cherish her. Today, we may not always be able to see Country instantly, but if we call to her, we can always sense her and feel her embrace.

The Warrawong Community Health Centre presents a range of opportunities to explore and embed notions of Country. Drawing from Yerrabingin's design methodology - *Wanggani Dhayar* (Listen to Country), local First Nations community members, the project team, and client were invited to participate in a design workshop to better understand the cultural context and site specific opportunities within the landscape.

Gathered on Dharawal Country, the workshop focused on exploring the cultural narratives and spatial design opportunities of the site, encouraging participants to generate ideas, annotate maps, and raise any questions or concerns.

Below recounts the cultural narratives presented, outlining the key questions and responses each group were asked to consider:



*Shapes of Our  
Land and Sea*



*Special  
Connections*



*A Guiding  
Place*

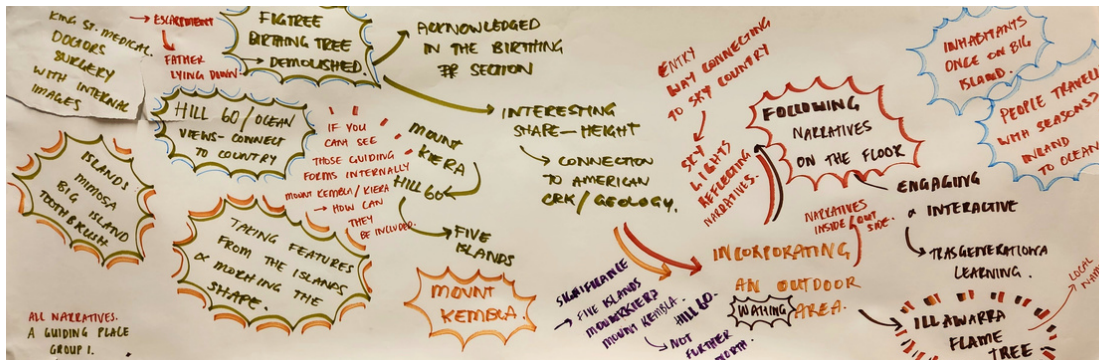


# Group 1

## Narratives

### Key questions to consider

- What are your thoughts on the narratives? How could these be expanded upon?
- Could you share any local stories or personal experiences that underscore the significance of these narratives?
- What elements of the local environment and Country aren't shared here and could be incorporated into the design?
- What stories are not captured?



### Responses:

- Mount Kembla Escarpment - Father lying down
- King St medical Doctors Surgery with internal images
- Fig tree / birthing tree demolished
- Acknowledged in the birthing section
- Interesting shape - heart
- Connection to American Creek / Geology
- Hill 60 / ocean views - connect to Country
- Islands - mimosa, Big Island, Tooth Brush
- Taking features from the islands and morphing the shape
- Significance of five islands and Mount Kiera / Mount Kembla
- Incorporating an outdoor waiting area
- Entry way connecting to Sky Country
- Sky lights reflecting narratives
- Following narratives on the floor
- Engaging and interactive - transgenerational learning
- Illawarra Flame Tree - local name?
- Inhabitants once on Big Island
- People travelling with seasons? Inland to Ocean



# Group 2

## Narratives

### Responses:

- Community Health Centre - how do you make it a place they want to come?
- Health in Warrawong - services the whole coast - how to reflect the whole area?
- Dual learning opportunities
- History Fishing - traps, plants, poisoning, stuns fish, stories?
- Multicultural - highest in NSW - how will everyone use the space
- Water - fresh water, saltwater, ocean, Birra (whale), Lake Illawarra



- Yuin / Woodi Woodi / Dharawal
- Land - Sea connection
- Significant for the whole coast
- Hill 60 - moving in, blending in with being multicultural
- Wayfinding moving through site
- Birthing tree / fig tree
- How do you feel within the space?
- Warrawong - windy hill - wind on hill
- Shape looking like the symbol for people meeting

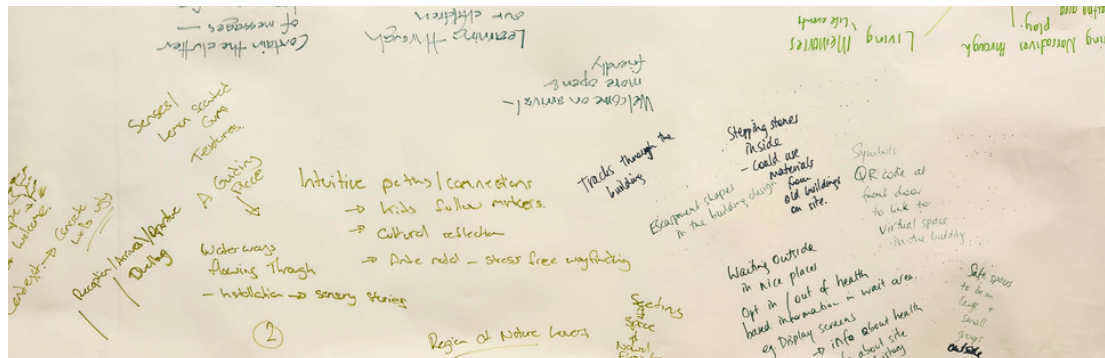


# Group 3

## Narratives

### Responses:

- Trees / landscape
- Sense of welcome
- Context - concrete walls ugly
- Reception / arrival / departure / dwelling
- Senses
- Lemon scented gum



- Textures
- Waterways flowing through
- Installation - sensory stories
- Intuitive paths / connections
- Kids follow markers
- Cultural reflection
- Art - stress free wayfinding
- Welcome on arrival - more open and friendly
- Learning through our children
- Contain the clutter of messages - leave room for experience!
- Tracks through the building
- Escarpment shapes
- Stepping stones inside - could use materials from old buildings on site
- Waiting outside in nice places
- Opt in / out of health based information in waiting area e.g. display screens to have information about health and information about site + history
- Symbols - QR codes at the front door to link virtual spaces in the building
- Safe spaces to be in large and small groups outside

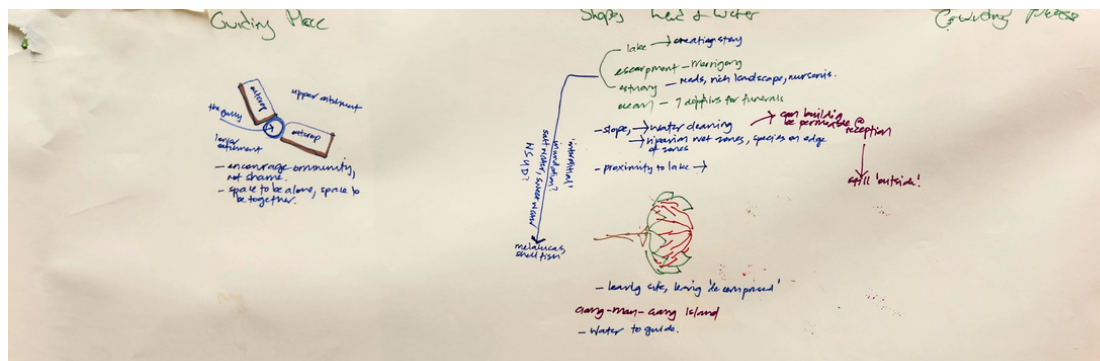


# Group 4

## Narratives

### Responses:

- Guiding Place - consider upper catchments and lower catchment
- Encourage community - not shame
- Space to be alone and space to be together
- Slopes - bed and water
- Lake - creating story
- Escarpment - Merrigong



- Estuary - reeds, rich landscape, nurseries
- Ocean - 7 dolphins for funerals
- Slope - water cleaning, riparian wet zones, species on edge of zones
- Proximity to lake
- 'Industrial' inundation?
- Saltwater / Sweet water WSUD?
- Melaleucas, shellfish
- Can building be permeable @ reception? - still outside!
- Leaving site, leaving 'decomposed'
- Garry Island
- Water to guide

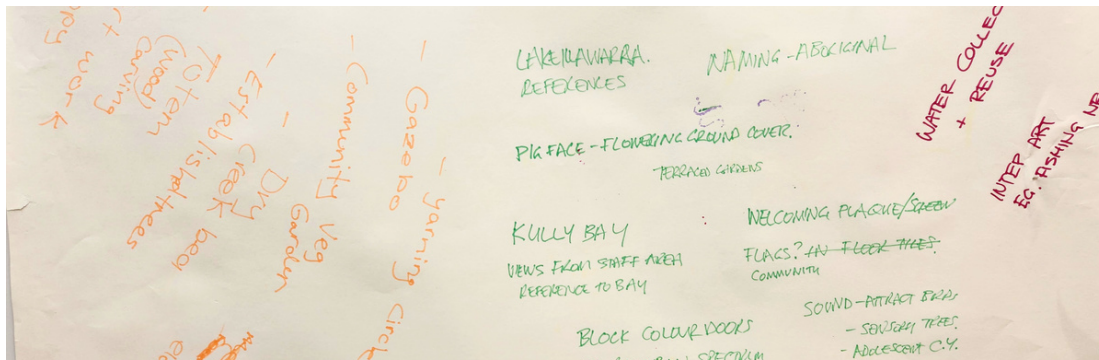


# Group 1

## Spatial Design

### Key questions to consider

- What would you like to see included within the space?
- How could the space reflect and incorporate Country?
- What would allow the space to feel safe, inviting, and evoke a sense of belonging?
- How could the materiality of the space respond to Country?
- What would the success of the project look like to you?



### Responses:

- Lake Illawarra references
- Pig face - flowering ground cover
- Terraced gardens
- Kully Bay - views from staff area, reference to Bay
- Block colour doors in rainbow spectrum
- Stepping stones, games
- Wayfinding of Warrawong - windswept / on a hill
- Naming - Aboriginal
- Welcoming plaque / screen
- Flags?
- Sound attract birds - sensory trees, adolescent C.Y.
- GyMEA Lilly
- Protection from ex. hospital for future construction
- Water collection + reuse
- Interpretive art e.g. fishing nets
- Yarning circle
- Gazebo
- Community Veg garden
- Dry creek bed - established trees - totem carvings
- Artwork
- Outdoor area for Elders



COMMUNITY SPACE  
 TOTEM POLE  
 LIGHT COLORED MATERIALS  
 SEASONS  
 FLOWER BANDS  
 FERTILE (GROW INSIDE)  
 IN THE MEETING (GROW EXTERIOR)  
 EDUCATION ETC.  
 STORIES INTO WINTER  
 SEASONS  
 REFERENCE SIGNIFICANT STORIES E.G. FINE ISLANDS  
 WELCOMING ENVIRONMENT  
 PA  
 TREE  
 TREE

- Stories imprinted into seating etc.
- Group exercise, education etc. In the meeting room (hall)
- Colours that reference the landscape greens, blues, touch of red
- Interpretive design to reference water
- Private courtyards from inside
- Seasonal flowering plants
- Reference significant stories e.g. five islands
- Community garden
- Water feature - kids?
- Illawarra Flame Tree - front and centre
- Welcoming environment
- Four islands expressed as garden beds, building being the fifth (Big Island)

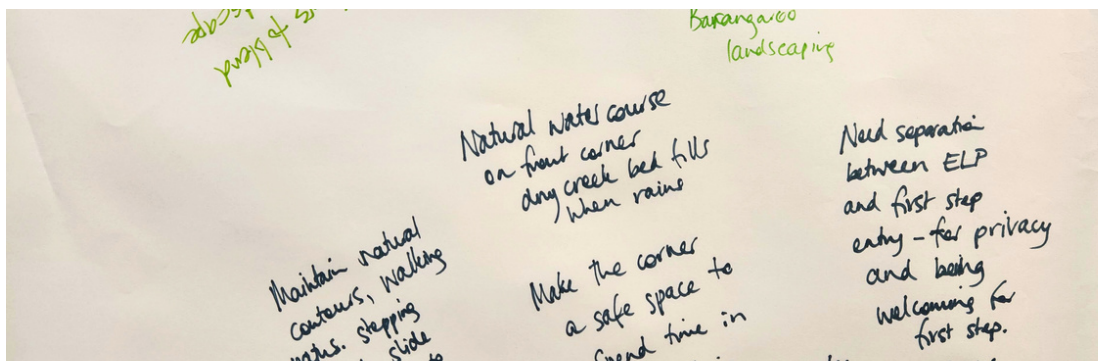


# Group 3

## Spatial Design

### Responses:

- Barangaroo landscaping
- Natural water course on front corner - dry creek bed fills when rains
- Make the corner a safe space to spend time in
- Sandstone retaining wall
- Rammed earth from Country
- Recycled material from old site



- Mountains - natural contours
- Walking paths
- Stepping stones, slide from level to level
- Colours blend with the landscape
- Need separation between ELP and first step entry - for privacy and being a welcoming first step
- Nice spaces using landscaping

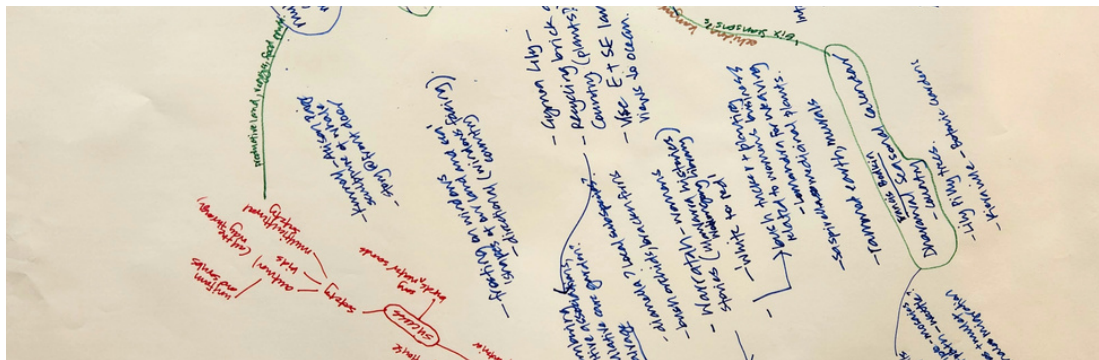


# Group 4

## Spatial Design

### Responses:

- Plants inside
- Reception like Aunty's house
- Dharawal colour palettes
- Less clinical, more homely - colours of interior
- Bird songs and water sounds



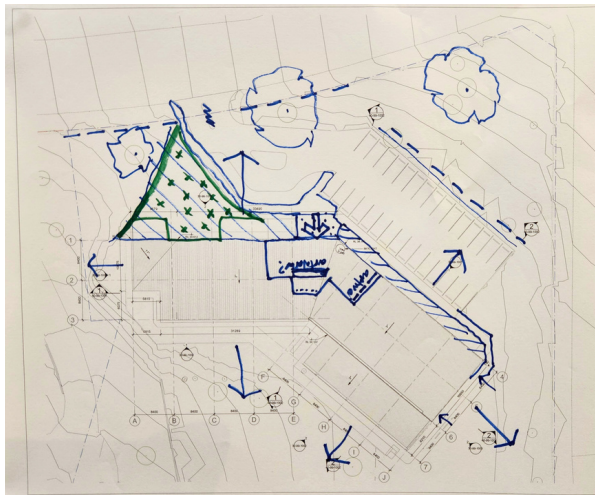
- Safety - uniforms and scrubs, autumnal (all the way through), kids, multicultural safety
- Productive land - veggies, food, garden
- Kurnell - Allison Paige sculpture of whale (story example)
- Story at front door
- Frosting on windows - 'shapes of our land and sea' (facing Country)
- Remembering positive associations, palliative care garden?
- Local species - dianella, bush orchids, bracken ferns, waratah (women's stories)
- Bush tucker + planting related to women's business e.g. lomandra for weaving
- Rammed earth - murals
- Recycling brick and soil from Country
- Landscapes to get views to ocean
- Planting to attract native birds
- Water feature (safe) sound of water, vision of sea!
- Interpretive signage - acknowledgement plaque @ reception and throughout site
- Relationship between plants and animals
- QLD example - mosaics into footpath - wattle?
- Grubs + mullet
- Whale migrations
- Dharawal seasonal calendar
- Multicultural community, multicultural space
- Sculptures of native animals



# Group 1-4

## Spatial Design

### Maps





# Group 1-4

## Spatial Design

Maps / site images

